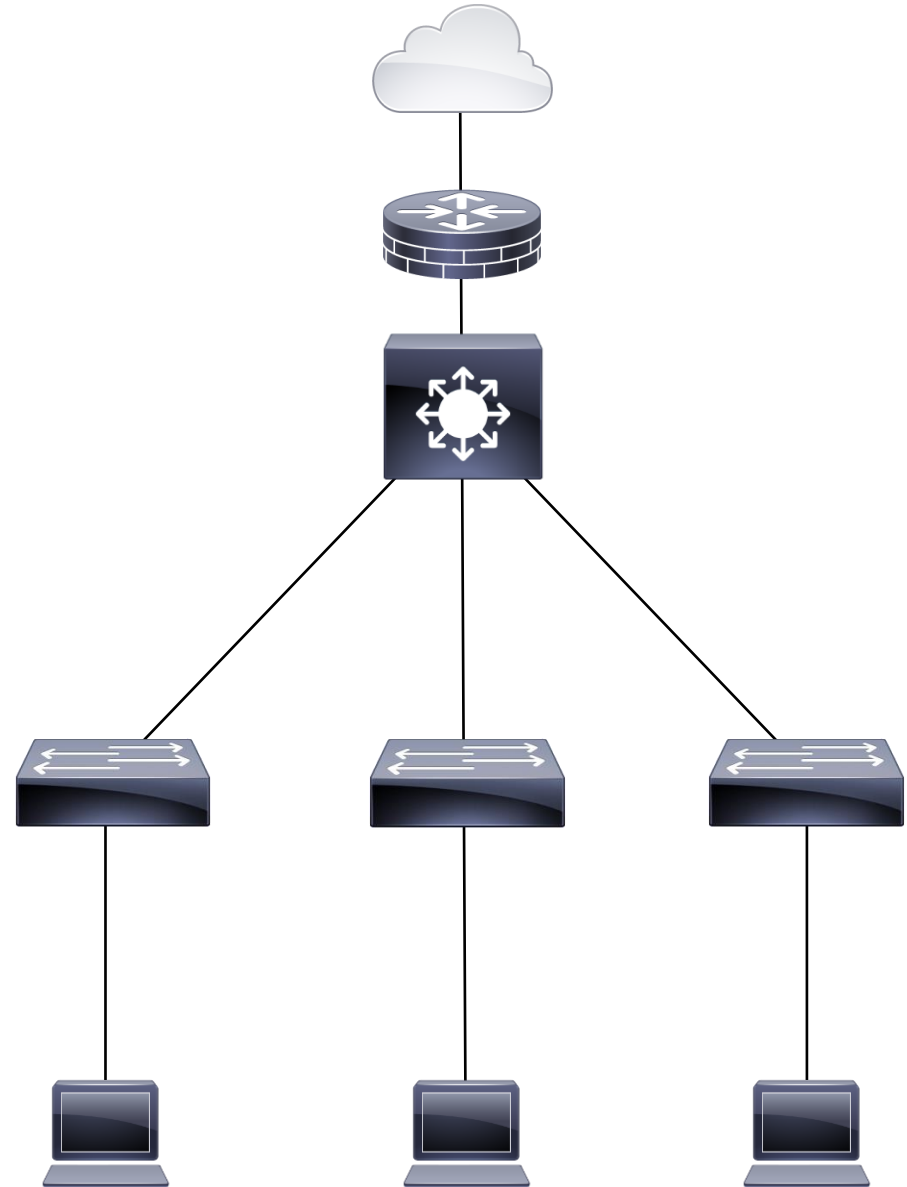
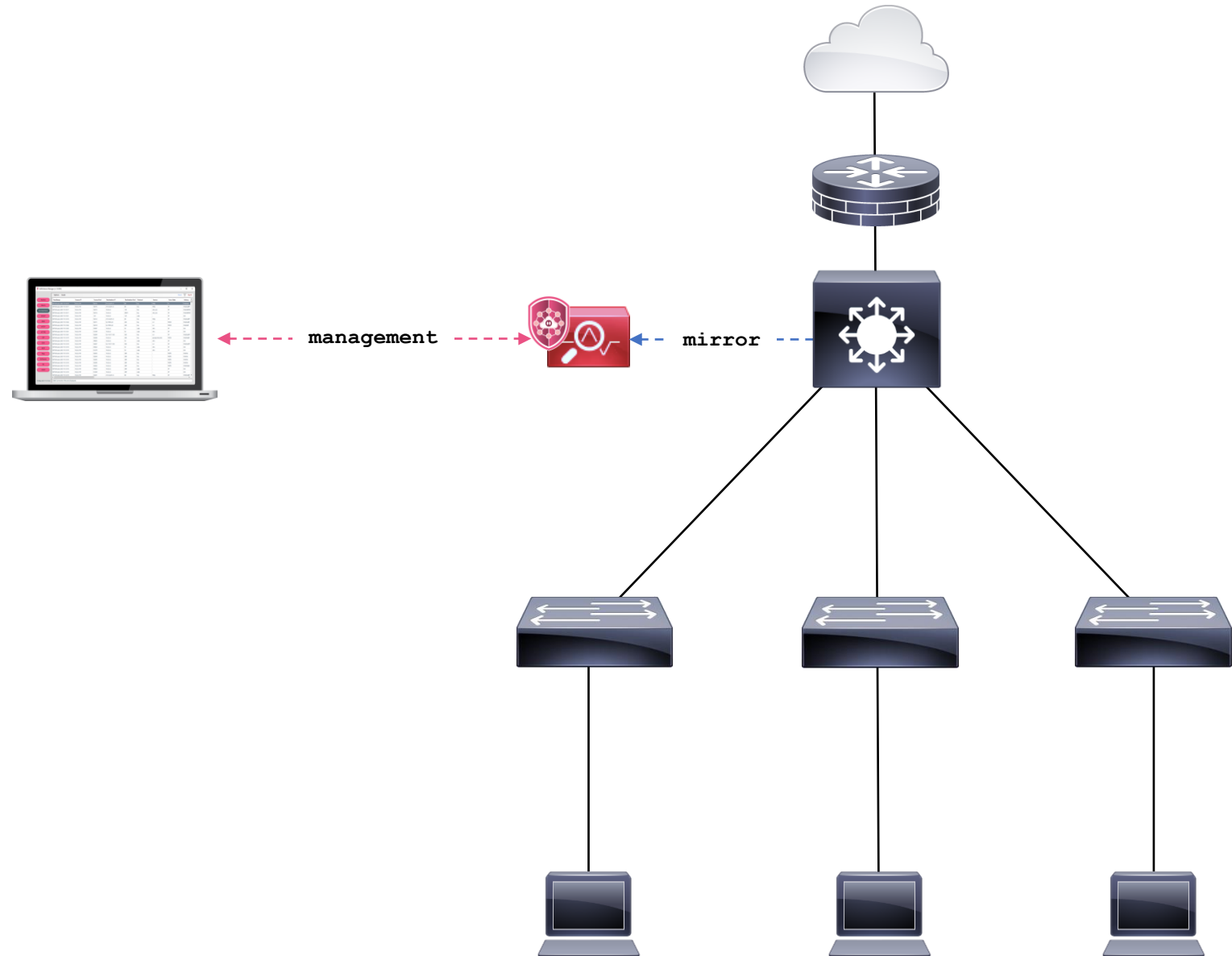


Deployment Configuration Options



PASSIVE Mirror or Span Port



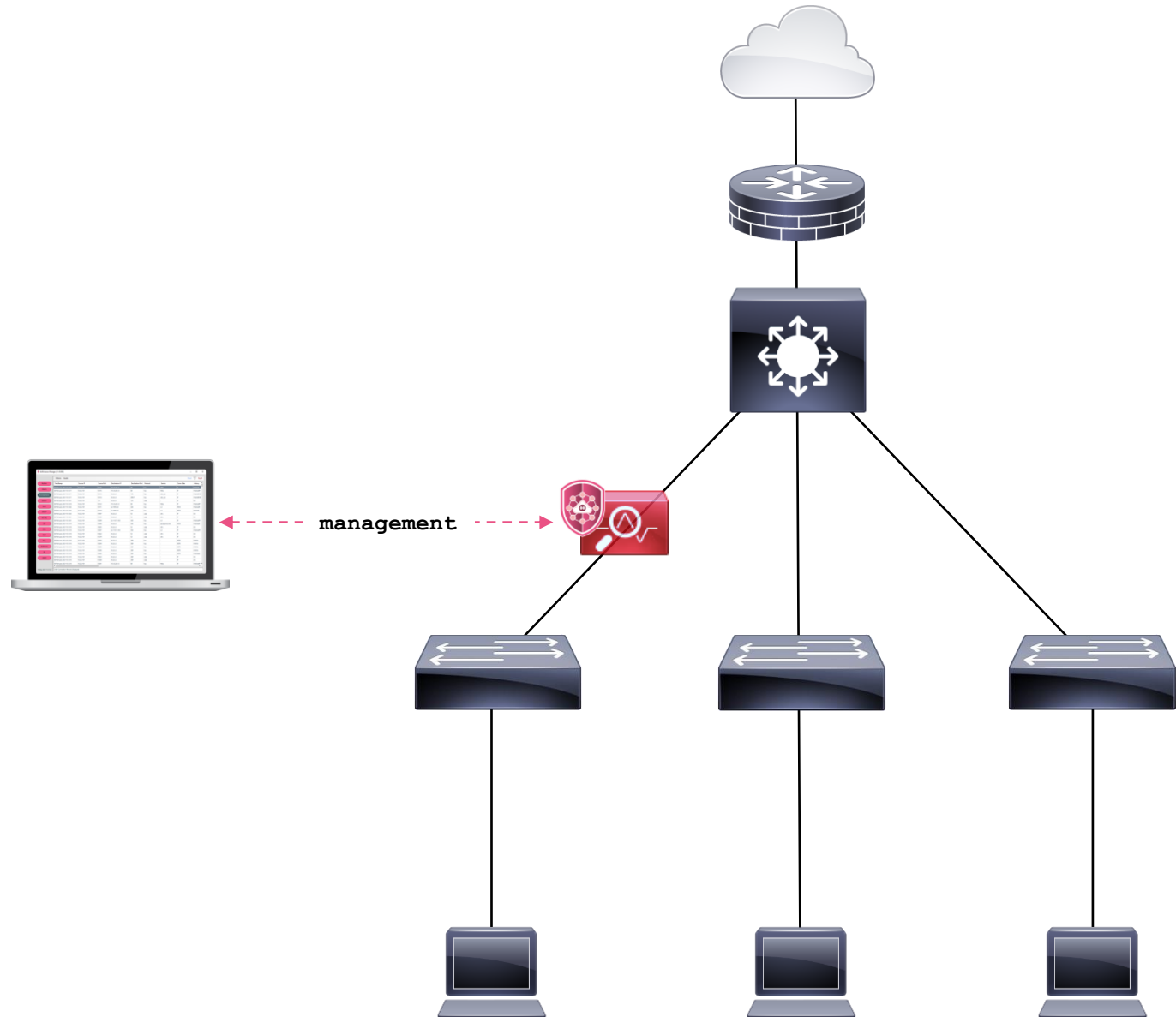
Sensor has 2 Network Interface Cards (NICs)

- NIC 1 – Promiscuous
- NIC 2 – IP Routable for management purposes

INLINE with out-of-band Management

Sensor has 3 Network Interface Cards (NICs)

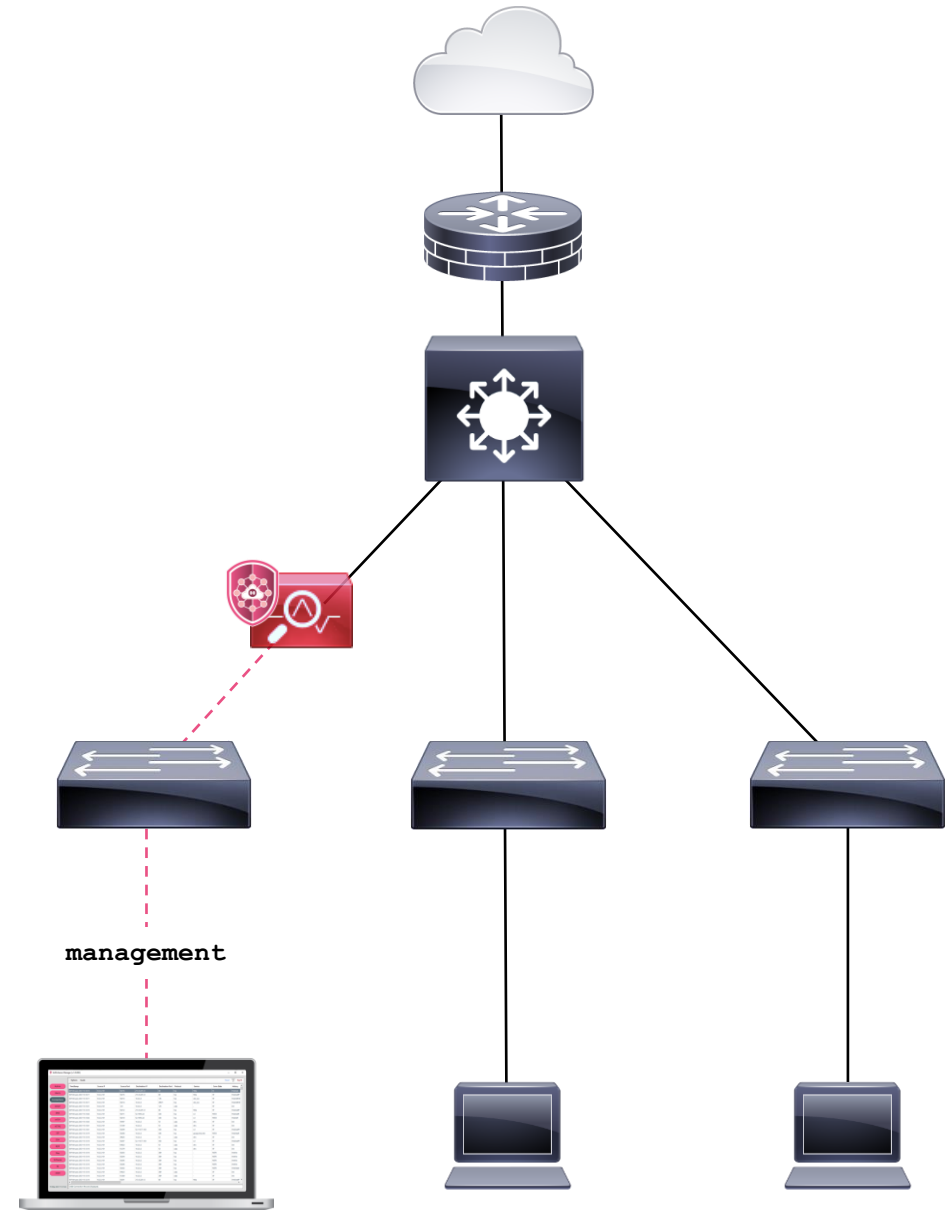
- NIC 1 – Bridge Mode
- NIC 2 - Bridge Mode
- NIC 3 – IP Routable for management purposes



INLINE with in-band Management

Sensor has 2 Network Interface Cards (NICs)

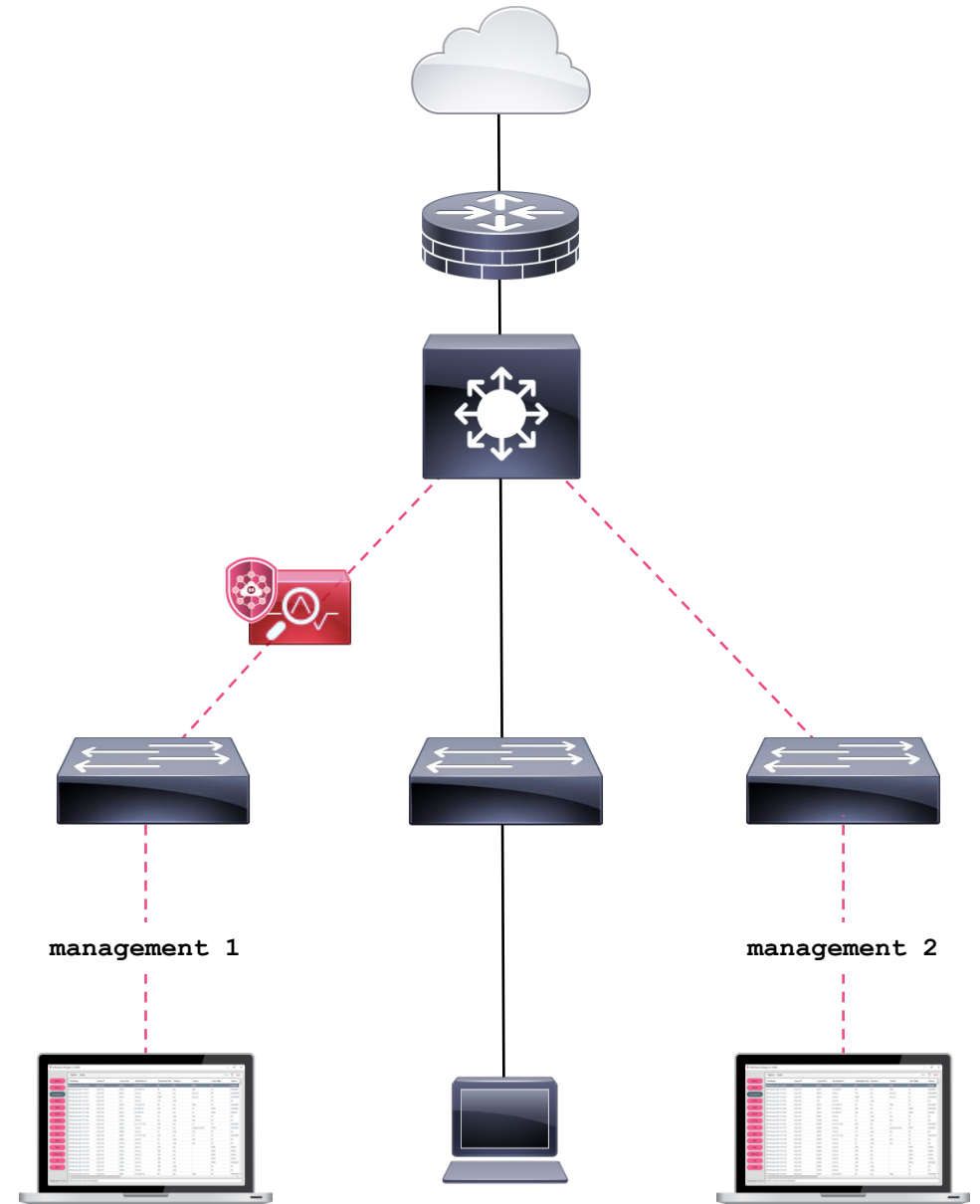
- NIC 1 – Bridge Mode
- NIC 2 - Bridge Mode
- Loopback Interface – IP Routable for management purposes



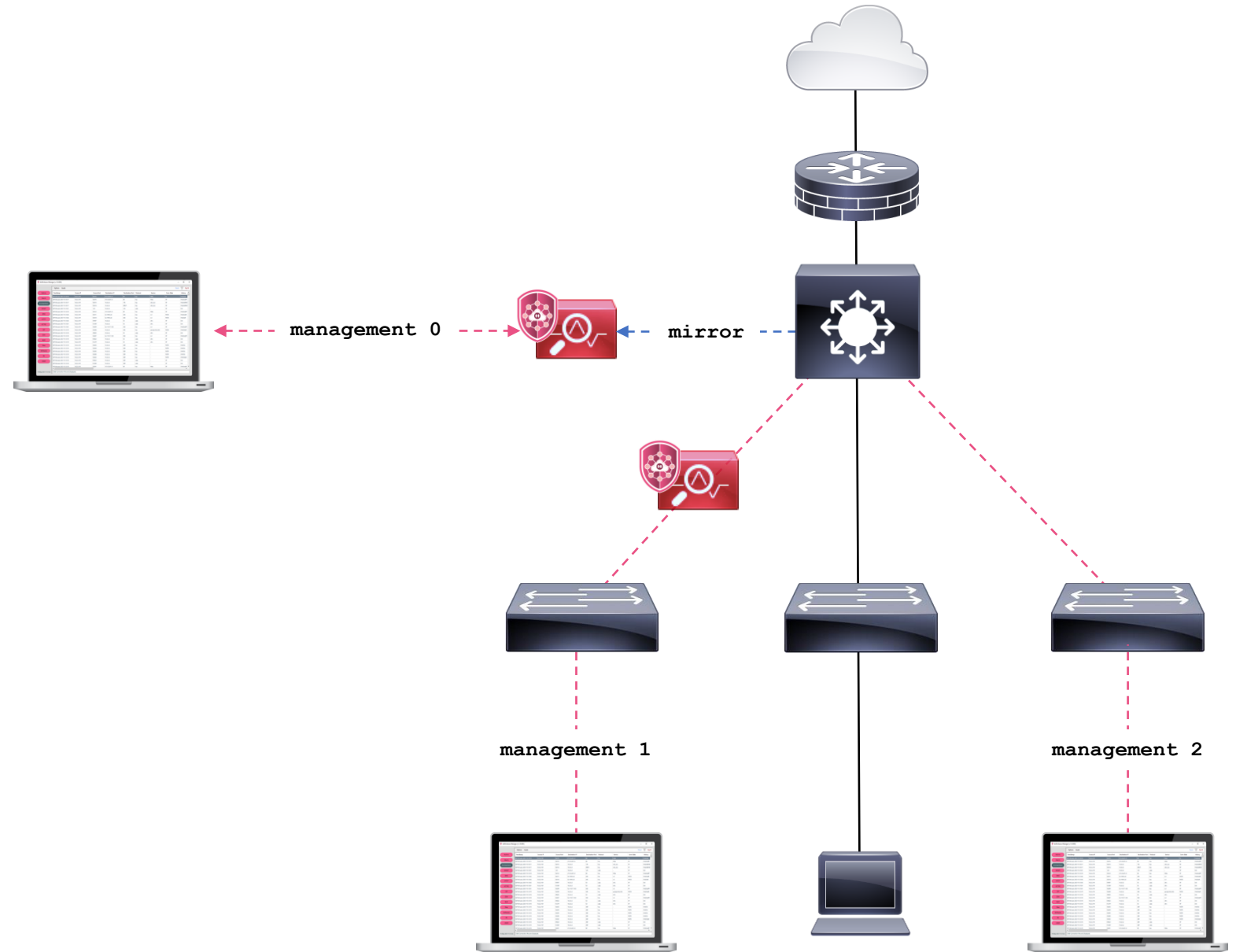
INLINE with in-band Management Multiple Management Applications

Sensor has 2 Network Interface Cards (NICs)

- NIC 1 – Bridge Mode
- NIC 2 - Bridge Mode
- Loopback Interface – IP Routable for management purposes



Combination

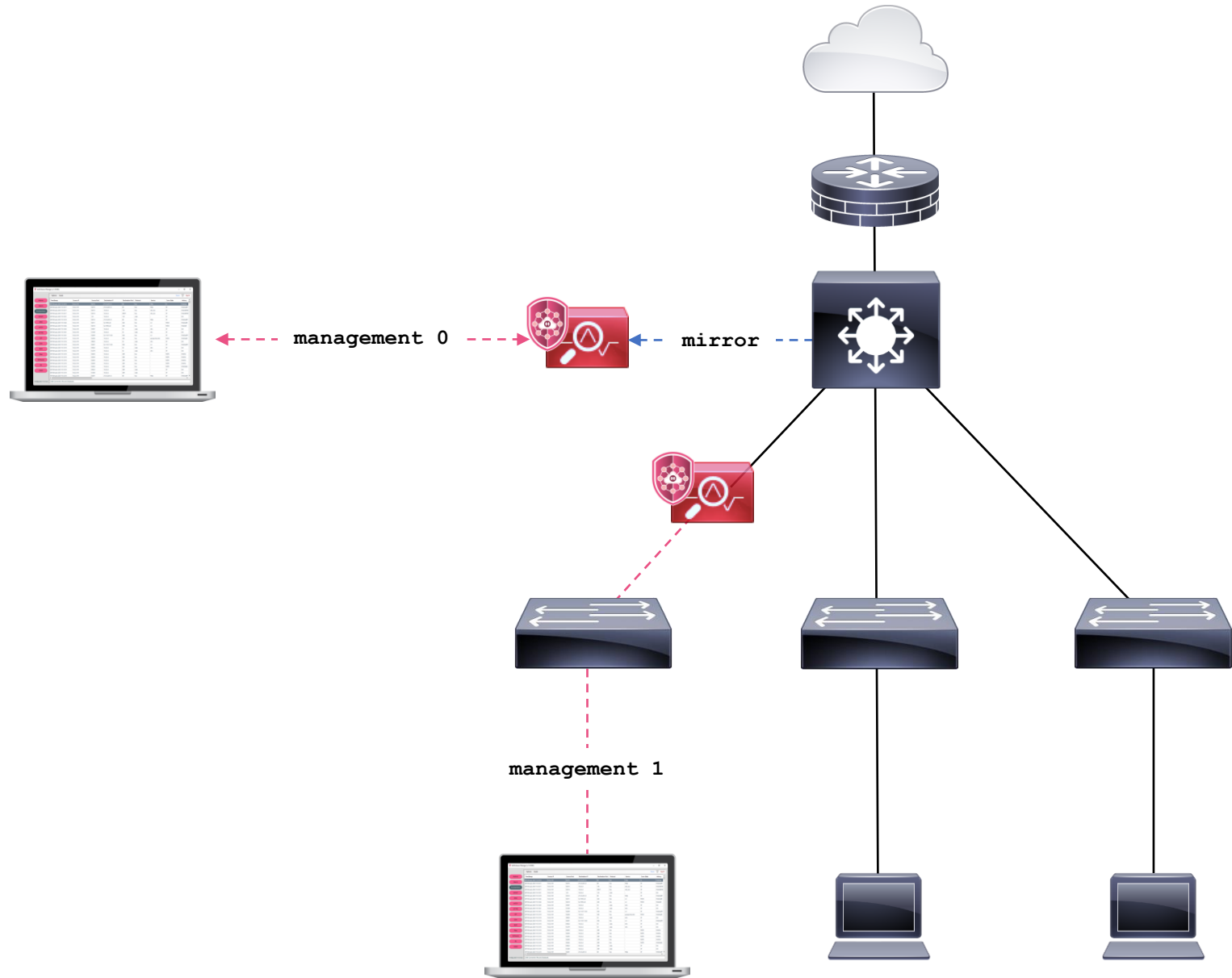


Sensors deployed in tactical locations

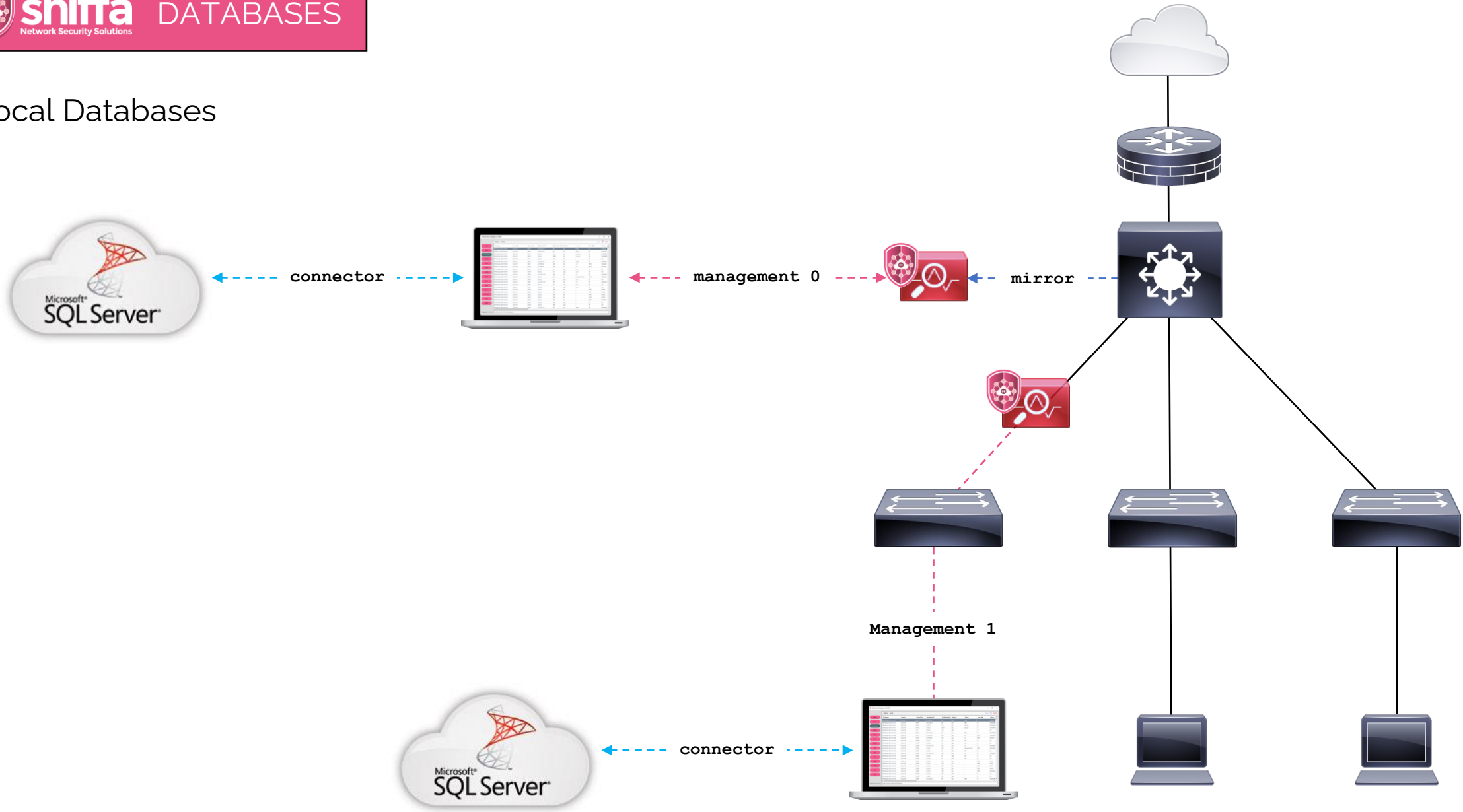
- Flexible
- Short or Long term



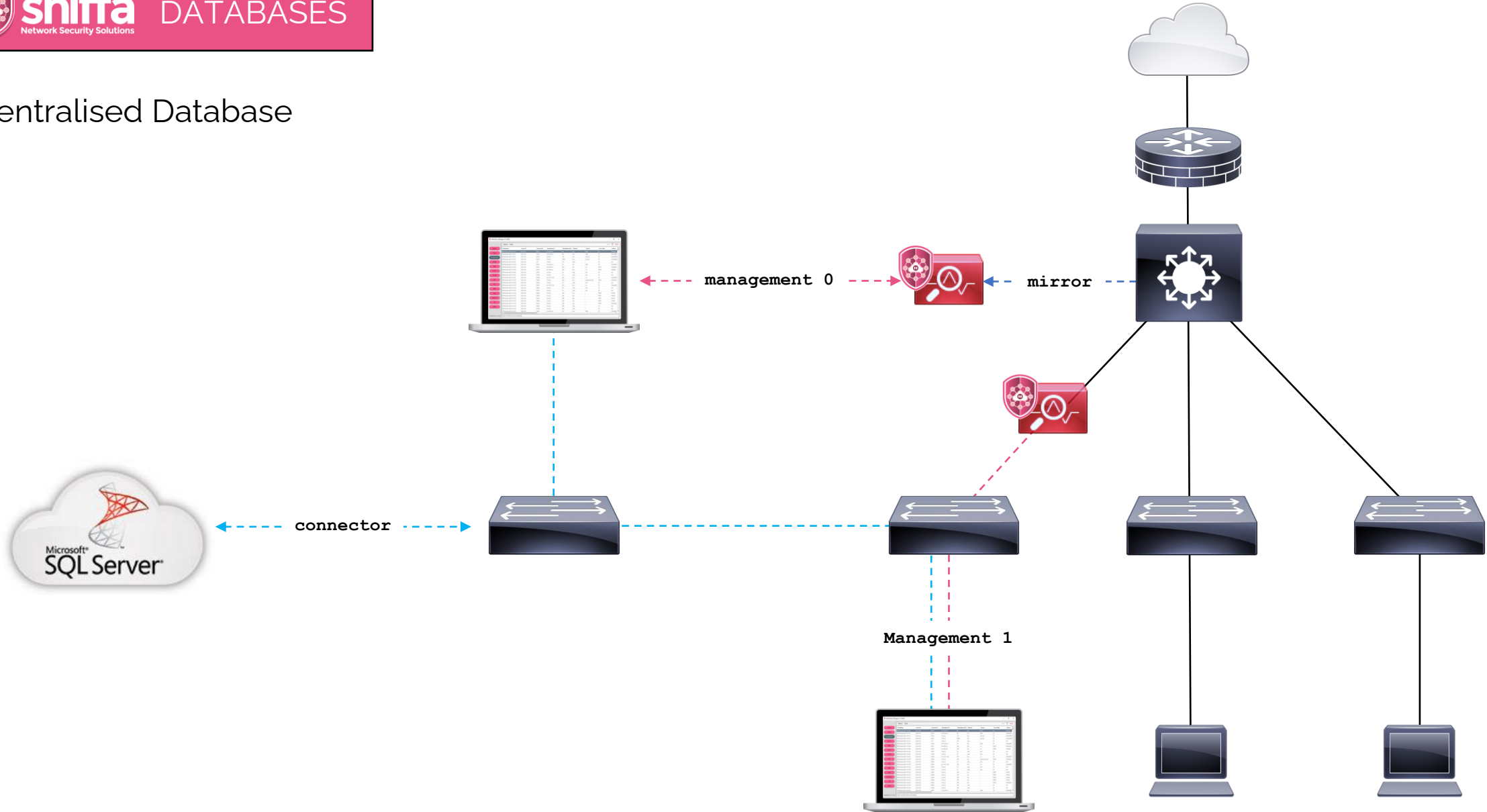
DATABASES



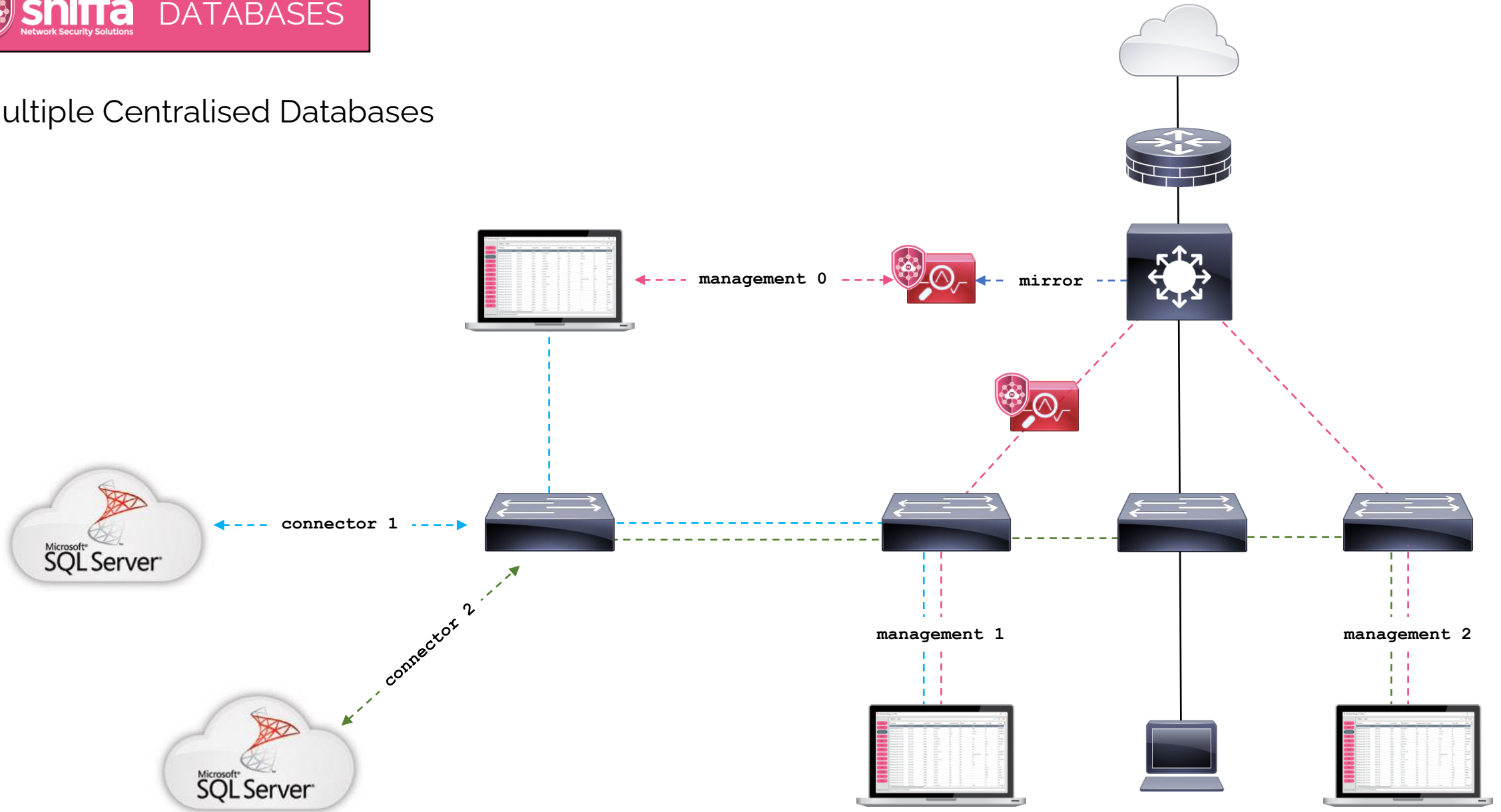
Local Databases



Centralised Database



Multiple Centralised Databases



Microsoft™ Window Service

